

# STOPPING ABUSE AND FEMALE EXPLOITATION (SAFE) PROGRAMME, ZIMBABWE



## OVERVIEW OF SAFE

- A 4 year gender-based violence (GBV) prevention and response programme in Zimbabwe, funded by the UK government
- Aims to reduce the perpetration of GBV (specifically IPV and child marriages) focusing on addressing economic insecurity and social and economic norms as key drivers.
- Implemented in 3 districts - 1 urban and 2 rural areas (Chiredzi, Mwenezi and Chikomba)
- Managed by Ecorys, with technical direction from Social Development Direct.

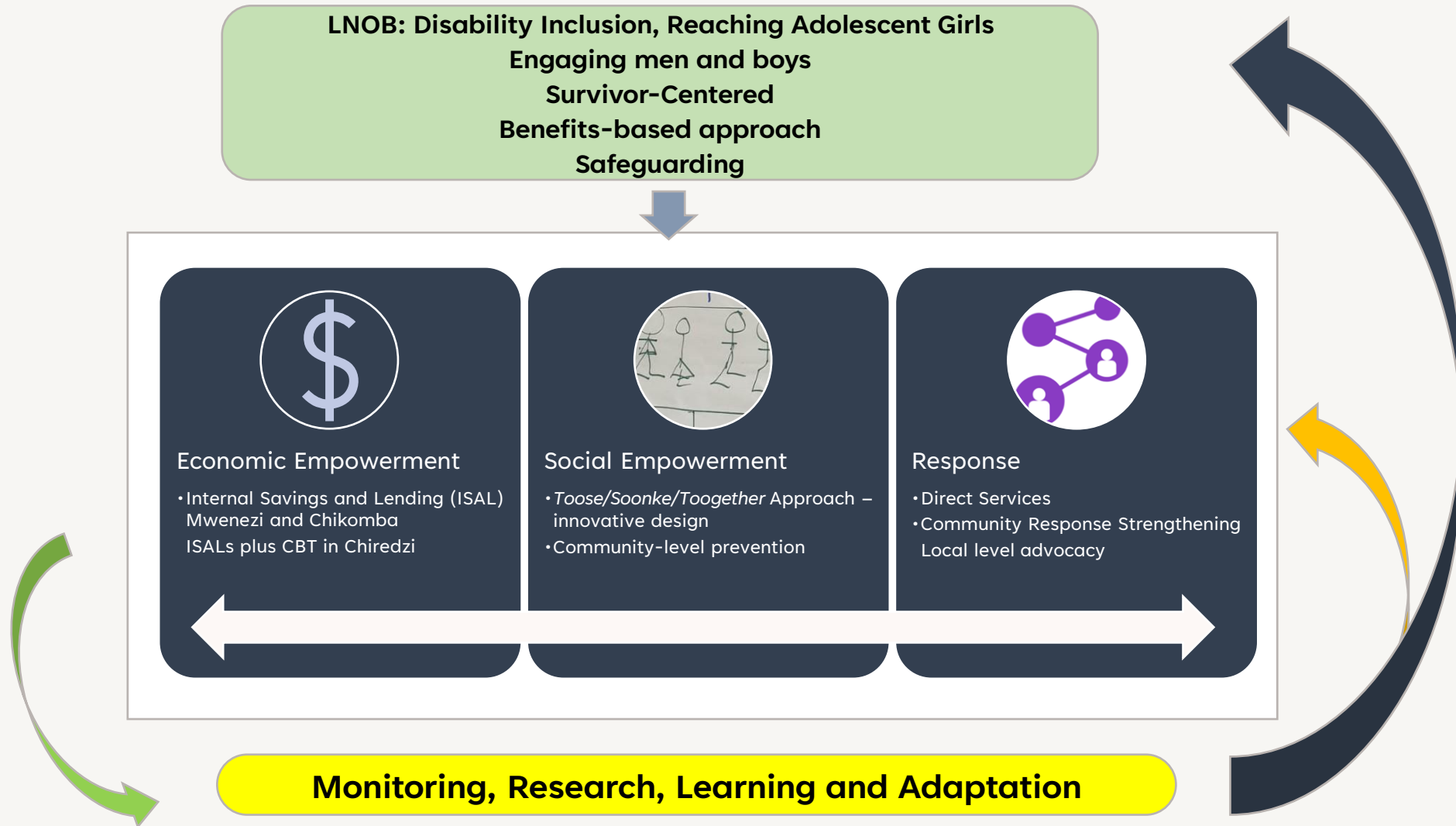


## SAFE THEORY OF CHANGE

- Central to the SAFE approach is the complementary effect of **economic empowerment** and **gender transformative activities** benefitting couples and some diverse households where a new income stream is used to create an impetus for families to engage in **joint visioning and planning**; and newly acquired financial stability is expected to decrease **family financial stress**.
- Household and community level discussion of GBV has the potential to support recognition of GBV and drive **demand for services**.



# SAFE INTEGRATED PACKAGE



# THE TOOSE MODEL

## Curriculum-Based Approach

Toose uses a curriculum-based approach that consists of 7 sessions that include:

- Engaging and Challenging Power
- Sharing Household Duties
- Visioning and Planning together
- Communication and sharing positive time among couples

## Cascade and Co-facilitation Approach

- It brings together the technical knowledge and experience of partner organisations as well as the local knowledge of cultures and norms of community-based cadres.

## Involvement, Engagement and Structure

- Emphasizes engagement and involvement of men and other family members to facilitate the wellbeing of the whole family
- Prioritizes effective inclusion of the most vulnerable e.g: persons with disabilities
- Facilitates structured and unstructured diffusion for greater community level impact and reach



# SAFE LEARNING AND ADAPTATION APPROACH

SAFE adopted a learn and adapt approach informed by

1. Ongoing internal and implementation monitoring process
2. Ongoing data gathering and reflection supported by a number of deep dives as provided below.

	Deep dive 1	Baseline	Deep dive 2	Deep dive 3	Deep dive 4	Deep dive 5	Summative evaluation
	Formative learning on social norms related to IPV and child marriage	Prevalence of and risk factors for GBV among SAFE beneficiaries, and testing logic of ToC	Qualitative contextualisation of the quantitative baseline results	Qualitative study on understanding the relationship between social and economic empowerment models and testing pathways of change	Process study. Learning on intervention design implementation, and contextual factors and how these have shaped intervention implementation and results.	Qualitative contextualisation of a possible quantitative endline and qualitative study measuring impact, including measuring how and why change happens, during the lifetime of the contract.	Effectiveness of intervention in leading to change and for whom



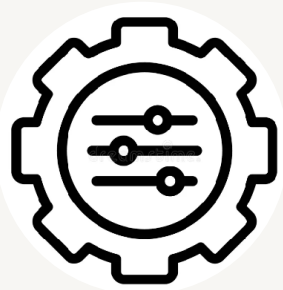
# IMPACT OF THE SAFE PACKAGE

- The SAFE integrated package has been iterated through 3 separate cohorts, with learning and adaptation processes to refine the approach through the different cycles.
- The programme model will be evaluated in early 2024.
- Monitoring data shows that most Toose participants demonstrate understanding of gender roles and (harmful) behaviours and are making changes to their behaviour to increase gender equality within the household; most participants state that Toose has helped them to prevent violent escalations and conflict with their partners; there are indications that households receiving CBT assistance and SAFE programming see a reduction in food insecurity, a reduction in IPV, and improved household cohesion.

# Ambitions for the Future



Scalability



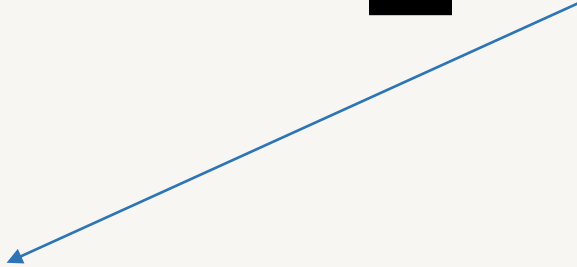
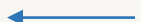
Diversification and adaptation



Influence



Evidence and learning





**Contact Us**

For further information, contact:



Kate Bishop – GBV Technical  
Team, Social Development Direct



[kate.bishop@sddirect.org.uk](mailto:kate.bishop@sddirect.org.uk)



THANK YOU